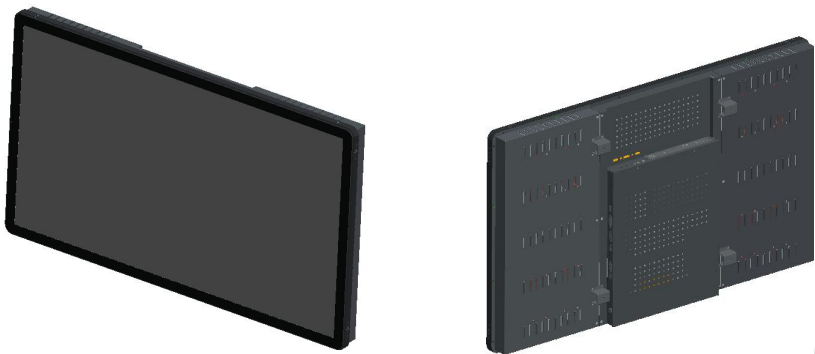




**Model: KOT-0430U-CA5P**

43" LCD Pure Flat PCAP Touch Monitor

**(Anti glare, dust-proof, riot proof, anti scraping)**



## Product Feature

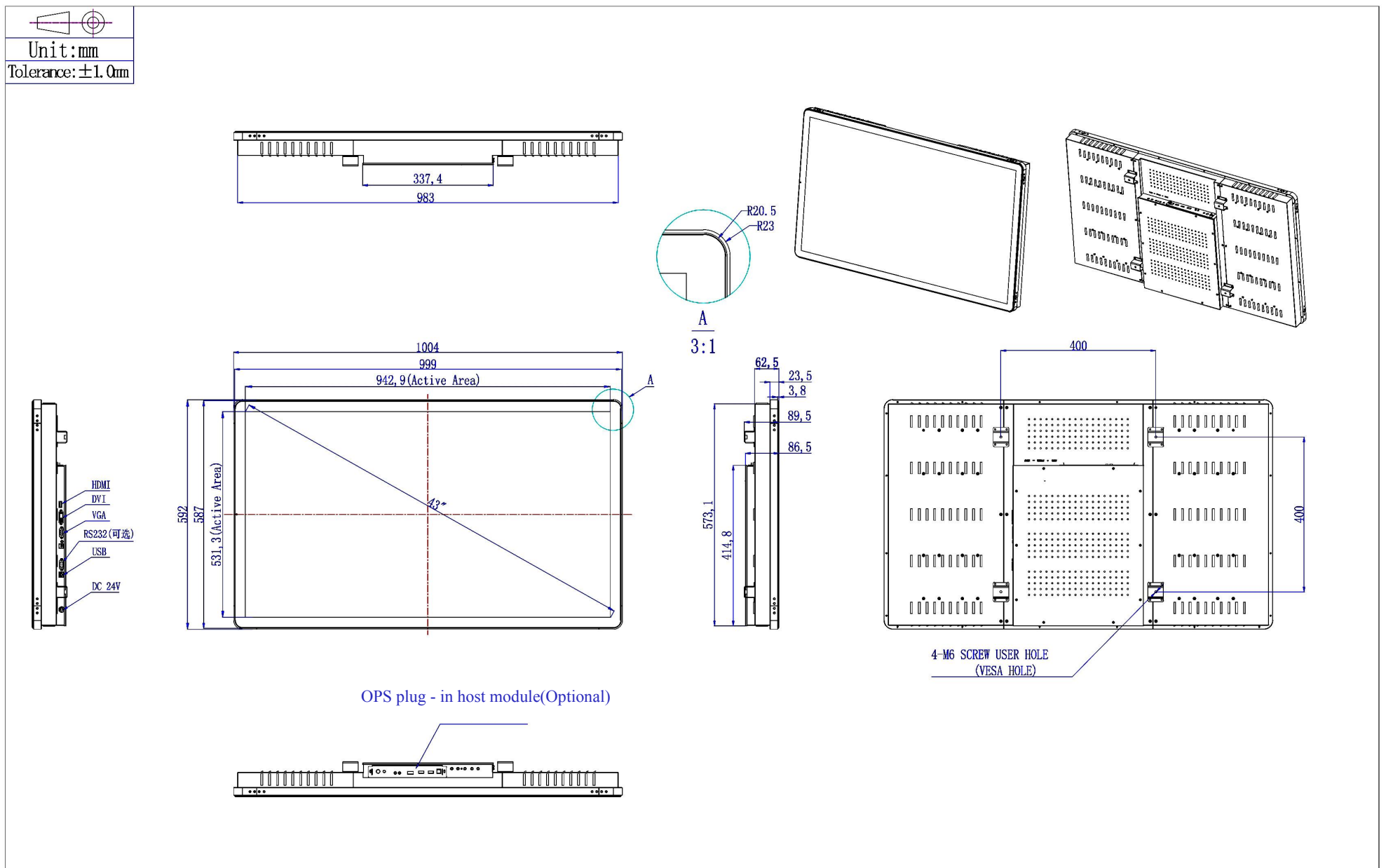
- ◆ PCAP with clear glass offer pristine optical clarity and touch durability.
- ◆ Pure Flat design.
- ◆ Professional-grade hardware with strengthened touchscreen glass to withstand the rigors of public use.
- ◆ Compact and slim profile for easy integration , multiple mounting options including VESA mount .
- ◆ Future generation panels phased-in without external changes.
- ◆ High quality panel with high brightness, high contrast ratio and broad viewing angle.
- ◆ USB touch interface port.
- ◆ Dual VGA/DVI /HDMI input video format.
- ◆ Worldwide agency approvals.
- ◆ CCC, ETL, FCC, CE, UL, CB, RoHS certificates.

## Specification

<b>Model No.</b>	<b>KOT- 0430U- CA5P</b>	
<b>Series</b>	Open frame, Pure flat, Projected Capacitive	
<b>Display Type</b>	16: 9 Ratio 43" a-Si TFT active matrix, LED backlight	
<b>Display Active Area</b>	942.9 mm×587mm	
<b>Touch Monitor Dimension</b>	<b>Width:</b> 1004mm <b>Height:</b> 592mm <b>Depth:</b> 89.5mm	
<b>Suggested Resolution</b>	1920×1080 @ 60Hz	
<b>Support Colors</b>	16.7M	
<b>Brightness (Typ.)</b>	Pure LCD Panel 3000cd/m <sup>2</sup>	
<b>Display Response Time (Typ.)</b>	8ms	
<b>Viewing Angle (Typ. at CR&gt; 10)</b>	Horizontal (left/right)	89°/89°
	Vertical (up/down)	89°/89°
<b>Contrast Ratio (Typ.)</b>	3000:1	
<b>Video Input</b>	VGA and DVI and HDMI	
<b>Frequency (H/V)</b>	30~ 80KHz/ 60~ 75Hz	
<b>Power Supply</b>	Input (line) voltage: 100-240 VAC, 50-60 Hz	
<b>Environment</b>	Operating Temp.	0~50°C
	Storage Temp.	-20~60°C
	Operating RH	20%~80%
	Storage RH	10%~90%
<b>MTBF</b>	50,000 Hours	
<b>OSD Control</b>	Buttons	AUTO, +, POWER, -, MENU
	Function	Brightness, Contrast Ratio, Auto-adjust, Phase, Clock, H/V Location, Languages, Function, Reset
<b>Touch screen Type</b>	KeeTouch 43" 5.3mm Projected Capacitive Touchscreen (10 points touch for win7)	
<b>Touch System Interface</b>	USB	
<b>Touch Response Time</b>	≅ 10ms	
<b>Weight(N.W/G.W)(Approx.)</b>	25kg (1pcs in One Package)	
<b>Package Dimensions (1pcs in One Package)</b>	1072(L)*173(W)*695(H)mm	
<b>Power Consumption</b>	270W Max.	
<b>Standby Power Consumption</b>	3W	
<b>Mount Interface</b>	1)VESA 75mm and 100mm 2)Mount Bracket, Horizontal or Vertical(Standard Mount Brackets Are Supplied)	
<b>Agency Approval</b>	ETL, FCC, CE, CB, RoHS, CCC	
<b>Regular Warranty</b>	1Year	

NOTE: The display SPEC. will change follow the relevant LCD panel brand and model

## Mechanical Dimensions



## Record of Revision

Version	Date	Description
1.0	2017/06/07	First Edition FW